

## Information Pack

Kings Grove Project | Peckham, South East London



## *Empty Houses to Homes Scheme*

### ***Project: Kings Grove, Peckham***

In April 2013 we started work on a large 3 story empty house, converting the basement into a one bed roomed flat, and the remaining 2 floors into a 3 bedroom maisonette. The property is located in Peckham, South East London, two minutes' walk from Queens Road Train Station (with direct trains from London Victoria and London Bridge).

As well as converting the empty property, the house needs extensive refurbishment and modernization to comply with current building regulations.

A charity has been identified working with women and families in need of a home to source the occupants for the two homes upon completion.

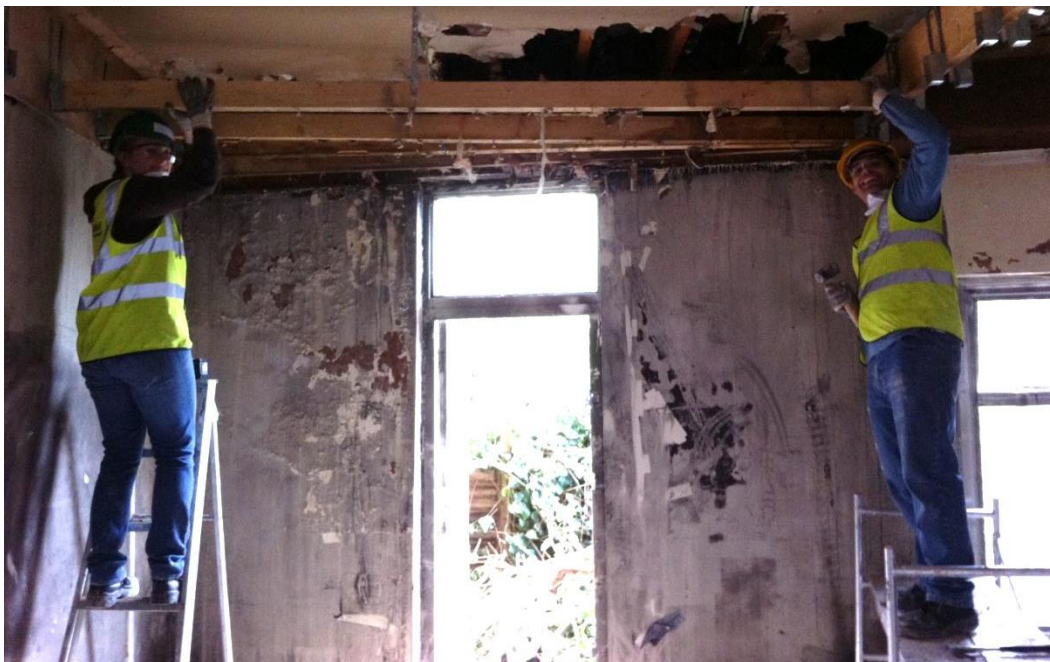
Volunteers will be involved from the very beginning of the conversion and refurbishment works ranging from demolition and stripping old fixtures and fittings to plaster-boarding and painting.

This project can take teams of 5 volunteers to through to the end of September 2013.

The Empty Homes Agency estimates that there are over 75,000 empty homes in London alone. In a time of acute housing need, empty property is a waste and can be detrimental to the local community, particularly if they are in a bad state of repair.

In response to this problem, Habitat for Humanity has developed a lease and repair scheme, designed to bring empty property that has been allowed to decay back into use and provide decent homes for people in need.

*Not only will these provide housing for local people in housing need, but the local community will also benefit from an improved environment as a derelict building is brought back to life.*





*The monies raised will be used to support our Empty Houses to Homes programme and will be recycled once this project has been completed to other future projects.*

## **How We Work**

Habitat for Humanity builds and refurbishes houses by using volunteers drawn from all sections of the community who are supervised by skilled construction staff and qualified contractors.

All volunteers will be supervised by our experienced construction team when on site and SHfH will provide all tools and equipment needed, including protective clothing where necessary, to enable the works to be carried out both safely and to a high standard.

To ensure that an adequate level of supervision can be provided and in accordance with health and safety assessments, at any stage of the project when only one flat is being worked on, the maximum group size on site will be **5 volunteers**.

## **Project Costings**

The project is being funded by Habitat for Humanity under our Empty Houses to Homes Programme.

We are hoping that corporate supporters will be able to make a contribution of £100 per volunteer per day but we also want to hear from companies able to make smaller contributions.

## **Contact**

For more detailed information on how you can support our Empty Houses to Homes scheme, or about volunteering on this specific project, please contact:



Gareth Hepworth, CEO  
[gareth.hepworth@shfh.org.uk](mailto:gareth.hepworth@shfh.org.uk)



Diane Regan, Corporate Relations Manager  
[diane.regan@shfh.org.uk](mailto:diane.regan@shfh.org.uk)

HfH office: **0207 732 0066**

Habitat for Humanity  
93 Gordon Road  
London  
SE15 3RR